

Migration Manager Installation Manual

Installation and setup

Before you commence with the actual installation, make sure you meet the requirements.

Finally, if you want to be able to import more than 10 lines at a time, make sure you have a license and refer to the final chapter in this section on how to deploy this license.

Requirements

Migration Manager must be installed on a Windows operation system.

Operating System with the following requirements fulfilled:

- .Net Framework 4.0 or later.

Installation

1. Unzip and run setup.exe to install Migration manager.
2. Accept the License agreement
3. Start the installation

Connection settings

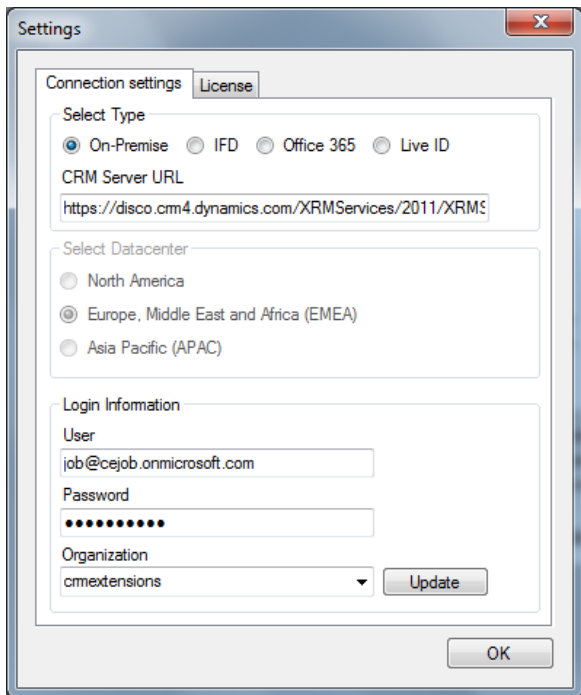
You have to setup the connection to the Dynamics CRM solution you want to import data to.

Migration Manager can connect to Dynamics CRM 2011 on all platforms:

- On-premise
- Internet faced deployment
- Office 365
- Microsoft Online

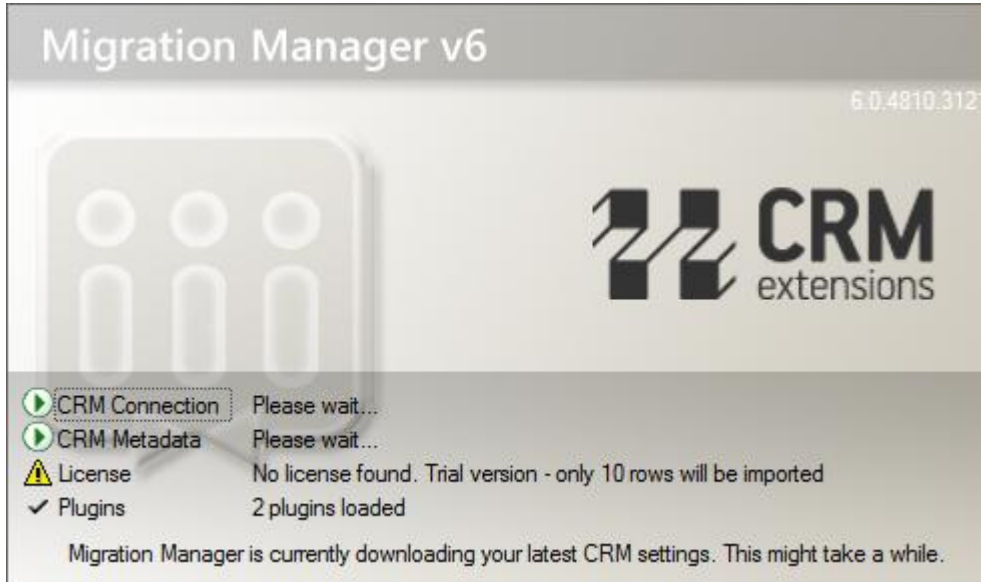
If you are using Office 365 or Microsoft Online do you have to verify which region your deployment are allocated:

- North America
- EMEA (Europe, Middle East and Africa)
- APAC (Asia Pacific)



Use a user with administrative rights in CRM. Type in username and password and click 'Update'

All Organizations the user are related to will appear in the dropdown box. Select the organization you want to import data to and click OK



The first time the product is launch will it download the current metadata (table and field information) of the current CRM organization. It can take up to 5 minutes the first time.

Now you are ready to start your migration. The trail version is limited to only 10 records. Go to www.crmextensions.com and purchase a full license with no restrictions on import volume.

Use our User Manual for information of how to use the product.